

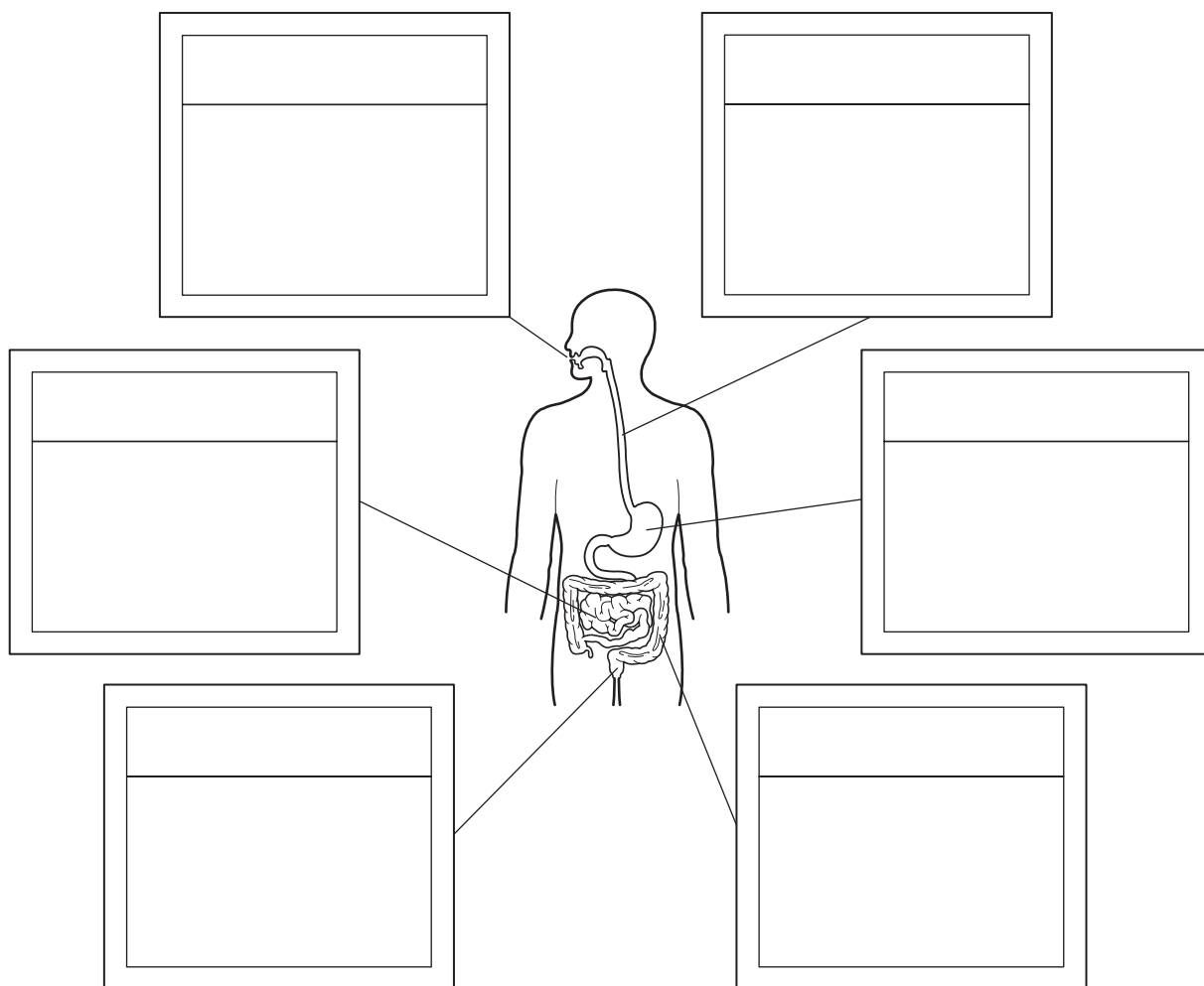
# The digestive system

Name \_\_\_\_\_ Class \_\_\_\_\_

On the diagram below, write in the name of the organ that each line is pointing to. Use these words:

**rectum small intestine stomach mouth gullet large intestine**

Now cut out the boxes at the bottom of the page showing the functions of these organs. Stick the correct box underneath the correct organ name.



**S literacy, knowledge**



<i>Water is absorbed here.</i>	<i>Faeces are stored here.</i>	<i>Takes food to the stomach.</i>
<i>More enzymes are added here, to complete digestion. The soluble food is absorbed.</i>	<i>Food is ground up here and mixed with saliva which contains an enzyme to digest starch.</i>	<i>The food is churned up with strong acid here and enzymes digest proteins.</i>